



Dakota
Power

Monday

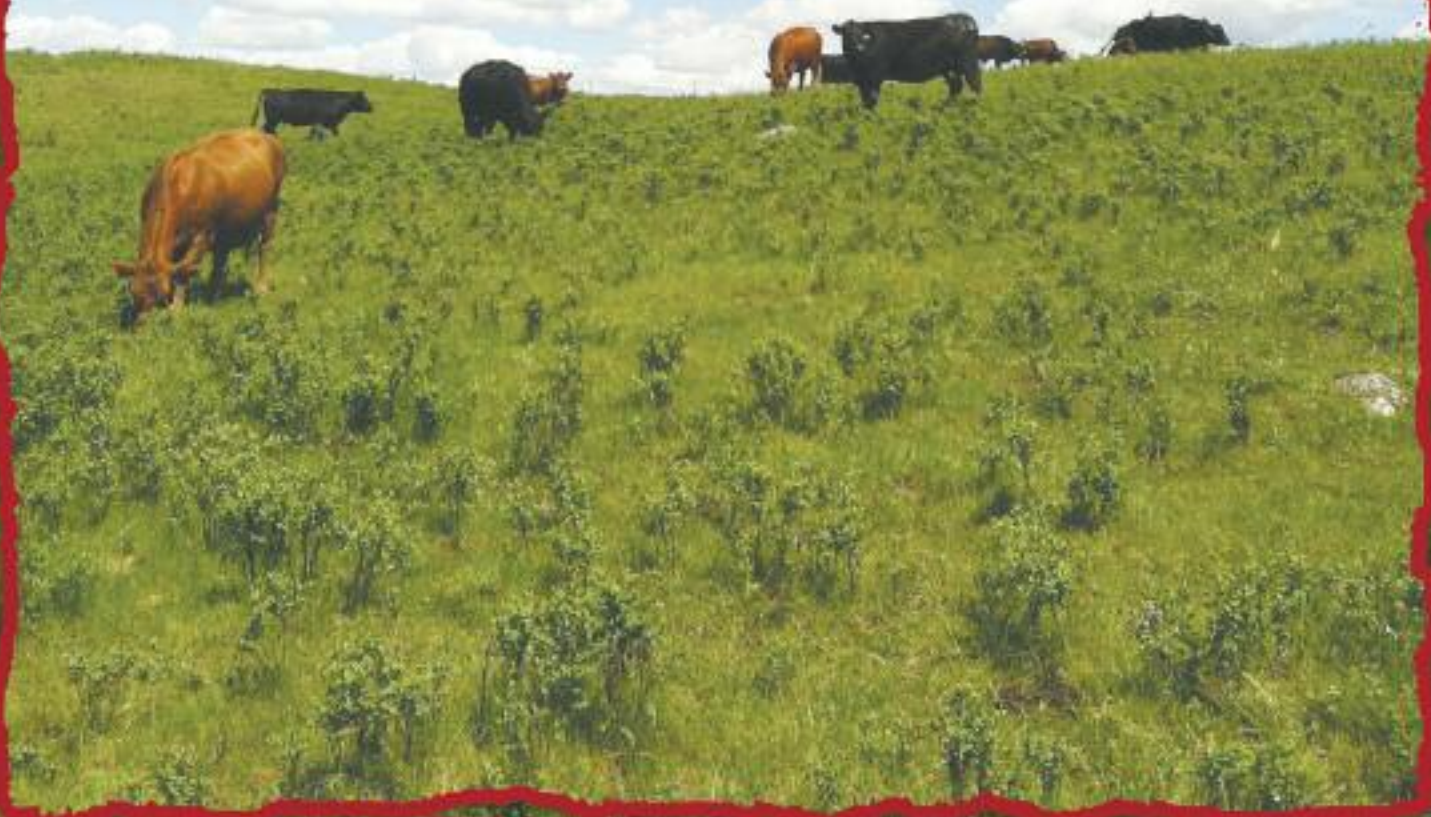
February 9

2015

12:30 CST

*Winter Show Building
Valley City, North Dakota*

Bull Sale



Welcome

Welcome from all of us in the Dakota Power group. We are truly grateful for your interest in our programs and the opportunity to present to you an exciting set of Simmental genetics.

Wow what a year to be in the cattle business, record high price and lower input costs. We all would like to see prices like this for a while but what goes up will come down. So we all need to position ourselves genetically to move forward and remain profitable. We feel this set of bulls will do that for you.

As a group we work together to offer you a set of bulls that are functional. It is a pleasure to work together as a group and bring you a set of cattle that are similar in type and kind, as our philosophies in raising cattle are on the same track. We aim to please, our goal is to offer you the best set of cattle, numbers and genetics available at one place at one time.

This is the most powerful set of bulls we have ever offered. As a group, each and every year we expect to offer you a set bulls superior to those before.

This set of bulls will have what you are looking for. Look through the offering, find what you like and give any of us a call to discuss your needs. We are always happy to lend a hand in finding the right bull and genetics to fit your operation.

We are very excited about this 2015 offering. On February 9th, we will bring another great group of bulls to offer you a superior set of genetics.

Dakota Power Group



Producing Quality Simmental Stock

Patrick & Lori Thorson

PO Box 1

Kindred, ND 58051

701-371-8230

www.blacktiecattle.com



Jerry, Kelly & Bryan Hanson

11010 County Rd 26 • Hannaford, ND 58448

701-789-1391 • 701-789-0655

www.triplehsimmentals.com



Bull Sale

Selling

68 Powerful Bulls

Blacks, Reds, Percentage and Purebred

Monday, February 9, 2015 at 12:30 pm CST
Lunch at 11:00 before the sale.

Sale location

Winter Show Building in Valley City, ND
South Building

Viewing Bulls

View bulls on Saturday, February 7.
Also, view bulls all day Sunday and
Monday view bulls from 9:00 am - 12:30 pm.

Sale Headquarters

American Inn
280 Winter Show Road
Valley City, ND 58072
701-845-5551

Auctioneer

Tracy Harl
402-469-3852

Publication Representative

Jeff Thomas
406-581-8859
Lee A. Sagvold, Mcleod, North Dakota
701-680-9459
Cattle Business Weekly Rep - Kris Peterson
701-339-0305

Sale Terms

All cattle sell under the recommended
Sale Terms and Conditions of the American Simmental
Association and are available by request. 1/3 semen
interest will be retained by breeder on all lots.

Delivery

Free delivery within the state. We will provide free
keep on the bulls until April 1, 2015. After April 1, 2015
there will be a charge of \$2.00 per day.

Guarantee

Bulls will be 100% guaranteed to semen test and breed. If
bulls are taken home to feed until April 1, 2014 risk is at the
buyer's expense. It is suggested that all bulls be insured.



Sale Day Phones:

Pat Thorson: 701-371-8230

Lori Thorson: 701-866-0444

Bryan Hanson: 701-789-0655

Kelly Hanson: 701-789-1391

**In event of adverse weather.
Storm date February 10, 2015**

Created by:

ASA PUBLICATION, INC

2 Simmental Way, Bozeman, MT 59715
Phone: 406-587-2778 • Fax: 406-587-8853
www.simmental.org

1**THSR PRIME BEEF B401**

ASA# 2854504

Owned by: TRIPLE H SIMMENTALS • Blk Polled PB

Tattoo: B401 • BD: 1/3/14 • Adj. BW: 79 lbs. • Adj. WW: 755 lbs.

Sire: **WS PRIME BEEF Z8**
 — WS BEEF KING W107
 — HSF MISS SKY 87U

Dam: **THSR MISS Y144**
 — WHEATLAND BULL 740 T
 — NPS MS GOOD FORTUNE H60

EPDs			
CE:	13.5	CW:	19
BW:	-1.6	YG:	-0.34
WW:	62.2	MB:	0.15
YW:	87	BF:	-0.06
MCE:	16.3	REA:	0.67
MM:	25.9	API:	135.1
MWW:	57	TI:	71.7

- * Potential calving ease bull
- * Hetero Black
- * Actual Birth Weight = 75 lbs. Ratio 111
- * Actual weaning weight = 764
- * Dam goes back to our great H60 cow

**Lot 3****Lot 4****Lot 5****2****THSR IDEAL B403**

ASA# 2854506

Owned by: TRIPLE H SIMMENTALS • Blk Polled PB

Tattoo: B403 • BD: 1/8/14 • Adj. BW: 77 lbs. • Adj. WW: 707 lbs.

Sire: **ELLINGSON IDEAL X13**
 — THSF FREEDOM 300N
 — ELLINGSON POWERLINE S681

Dam: **THSR MISS Y129**
 — MR NLC SUPERIOR S6018
 — THSR SCARLET S623

EPDs			
CE:	4.9	CW:	45.7
BW:	2.4	YG:	-0.37
WW:	80.4	MB:	-0.15
YW:	121.9	BF:	-0.07
MCE:	10.3	REA:	1.05
MM:	16.1	API:	99.2
MWW:	56.3	TI:	68.7

- * Growth Bull
- * Hetero Black and Homo Polled
- * Outstanding growth numbers
- * Excellent cow family

3**THSR DAKOTA B405**

ASA# 2854507

Owned by: TRIPLE H SIMMENTALS • Blk Polled PB

Tattoo: B405 • BD: 1/9/14 • Adj. BW: 95 lbs. • Adj. WW: 806 lbs.

Sire: **ES DAKOTA NK68**
 — SRS J914 PREFERRED BEEF
 — ESK68

Dam: **THSR MISS OUTBACK Z282**
 — DRS J91 OUTBACK 604S
 — KBHR S115

EPDs			
CE:	4.4	CW:	59.2
BW:	5.1	YG:	-0.22
WW:	90.3	MB:	0.05
YW:	138.1	BF:	-0.08
MCE:	12.9	REA:	0.72
MM:	16.9	API:	109.9
MWW:	62.1	TI:	75.8

- * Top 1% for weaning weight
- * Top 1% for yearling
- * Adjusted weaning weight = 806
- * Dam is a very good female
- * Growth Bull

4**THSR 740T B406**

ASA# 2854508

Owned by: TRIPLE H SIMMENTALS • Red Polled PB

Tattoo: B406 • BD: 1/9/14 • Adj. BW: 89 lbs. • Adj. WW: 845 lbs.

Sire: **WHEATLAND BULL 740 T**
 — THSF FREEDOM 300N
 — WHEATLAND LADY 442P

Dam: **KS CINNAMON J893**
 — NLC GOOD A NUFF 33G
 — KS MISS MACKFRID F645

EPDs			
CE:	7.8	CW:	20.5
BW:	1.7	YG:	-0.31
WW:	60.6	MB:	-0.21
YW:	81.5	BF:	-0.08
MCE:	13.9	REA:	0.46
MM:	19	API:	92.5
MWW:	49.3	TI:	55.8

- * Homozygous Polled
- * Non-diluter
- * Extremely long will add pay weight to his calves
- * Weaned off at 882 pounds
- * Growth Bull Herd sire

5**THSR MR BEEF B408**

ASA# 2854510

Owned by: TRIPLE H SIMMENTALS • Blk Polled PB

Tattoo: B408 • BD: 1/9/14 • Adj. BW: 89 lbs. • Adj. WW: 787 lbs.

Sire: **MR BEEF E141**
 — BS MR ARAPAHOE 811A
 — P&B LADY CH X094

Dam: **THSR MISS Y114**
 — MR NLC SUPERIOR S6018
 — THSR TARAH T705

EPDs			
CE:	5.4	CW:	32.2
BW:	3	YG:	-0.21
WW:	67.8	MB:	0.04
YW:	97.7	BF:	-0.05
MCE:	8.3	REA:	0.56
MM:	22.8	API:	105.1
MWW:	56.7	TI:	64.6

- * Homozygous Black
- * Homozygous Polled
- * High maternal traits keep all daughters
- * Growth Bull

6**BTS CJ 4001B**

ASA# 2890170

Owned by: BLACK TIE SIMMENTALS • Blk Polled PB

Tattoo: 4001B • BD: 1/9/14 • Adj. BW: 86 lbs. • Adj. WW: 872 lbs.

Sire: **KS CAPTN JACK T518**
 HOOKS SHEAR FORCE 38K
 BCLR MISS REBECCA R505

Dam: **BTS MS CLUB KING 2067Z**
 RC CLUB KING 040R
 BTS PT GOT IT DONE 841U

EPDs			
CE:	10.1	CW:	45.2
BW:	2.7	YG:	-0.29
WW:	87.6	MB:	0.14
YW:	121.6	BF:	-0.05
MCE:	12.6	REA:	0.96
MM:	20.8	API:	125.5
MWW:	64.6	TI:	80.3

*Homo Polled
 *Homo Black
 *Weaning weight ranks in the top 2% of purebred animals
 *Bull with big growth potential
 *Weaning weight ratio of 110%

8**THSR PRIME BEEF B412**

ASA# 2854513

Owned by: TRIPLE H SIMMENTALS • Blk Polled 3/4 SM

Tattoo: B412 • BD: 1/12/14 • Adj. BW: 88 lbs. • Adj. WW: 817 lbs.

Sire: **WS PRIME BEEF Z8**
 WS BEEF KING W107
 HSF MISS SKY 87U

Dam: **SYS LEGEND T701**
 ES BLACK LEGEND PK26
 SYS BANDO R508

EPDs			
CE:	14.6	CW:	27
BW:	-0.7	YG:	-0.27
WW:	67.4	MB:	0.42
YW:	98.2	BF:	-0.04
MCE:	13.6	REA:	0.73
MM:	25.5	API:	154.5
MWW:	59.2	TI:	77.6

*Heterozygous Black
 *Homozygous Polled
 *Herd Sire Quality
 *Top 10% for API
 *Curve bender bull
 *Dam is a top donor in our program

9**THSR 740T B416**

ASA# 2854517

Owned by: TRIPLE H SIMMENTALS • Red Polled PB

Tattoo: B416 • BD: 1/13/14 • Adj. BW: 85 lbs. • Adj. WW: 731 lbs.

Sire: **WHEATLAND BULL 740 T**
 THSF FREEDOM 300N
 WHEATLAND LADY 442P

Dam: **KS CINNAMON J893**
 NLC GOOD A NUFF 33G
 KS MISS MACKFRID F645

EPDs			
CE:	7.8	CW:	20.5
BW:	1.7	YG:	-0.31
WW:	60.6	MB:	-0.21
YW:	81.5	BF:	-0.08
MCE:	13.9	REA:	0.46
MM:	19	API:	92.5
MWW:	49.3	TI:	55.8

*Non-diluter
 *Growth Bull
 *full brother to B406
 *excellent cow family
 *Canadian Sired

11**BTS CLUB KING 4016B**

ASA# 2890185

Owned by: BLACK TIE SIMMENTALS • Blk Polled PB

Tattoo: 4016B • BD: 1/14/14 • Adj. BW: 83 lbs. • Adj. WW: 767 lbs.

Sire: **RC CLUB KING 040R**
 HC HUMMER 12M
 RC MISS GRIFFEY 038N

Dam: **THSR T733**
 TJ 57J THE GAMBLER
 OPPS MISS JEAN J24

EPDs			
CE:	8.3	CW:	33.2
BW:	3.6	YG:	-0.31
WW:	68.2	MB:	0.23
YW:	97.9	BF:	-0.06
MCE:	10.4	REA:	0.81
MM:	21	API:	118.2
MWW:	55.1	TI:	69.8

*Homo Black
 *841 lbs. actual weaning weight
 *Larger Frame bull
 *Will add length and frame to a calf crop

7**BTS CJ 4005B**

ASA# 2890268

Owned by: BLACK TIE SIMMENTALS • Blk Polled 3/4 SM

Tattoo: 4005B • BD: 1/10/14 • Adj. BW: 83 lbs. • Adj. WW: 790 lbs.

Sire: **KS CAPTN JACK T518**
 HOOKS SHEAR FORCE 38K
 BCLR MISS REBECCA R505

Dam: **BTS MS CAPTN JACK 2055Z**
 KS CAPTN JACK T518
 BTS I87 068X

EPDs			
CE:	12.1	CW:	36.9
BW:	1.7	YG:	-0.27
WW:	81.9	MB:	0.24
YW:	110.1	BF:	-0.03
MCE:	11.6	REA:	0.96
MM:	22.9	API:	128.5
MWW:	63.9	TI:	80.8

*Homo Polled
 *Hetero Black
 *77 lbs. actual birth weight
 *829 lbs. actual weaning weight



Lot 8

10**BTS CLUB KING 4015B**

ASA# 2890270

Owned by: BLACK TIE SIMMENTALS • Blk Polled PB

Tattoo: 4015B • BD: 1/14/14 • Adj. BW: 88 lbs. • Adj. WW: 753 lbs.

Sire: **RC CLUB KING 040R**
 HC HUMMER 12M
 RC MISS GRIFFEY 038N

Dam: **THSR T733**
 TJ 57J THE GAMBLER
 OPPS MISS JEAN J24

EPDs			
CE:	8.3	CW:	33.2
BW:	3.6	YG:	-0.31
WW:	68.2	MB:	0.23
YW:	97.9	BF:	-0.06
MCE:	10.4	REA:	0.81
MM:	21	API:	118.2
MWW:	55.1	TI:	69.8

*Homo Black
 *825 lbs. actual weaning weight
 *Larger Frame Bull
 *Will add length and frame to a calf crop



Lot 11



Lot 12

THSR FINAL ANSWER B429 ASA# 2854528

Owned by: TRIPLE H SIMMENTALS • Blk Polled 1/2 SM

Tattoo: B429 • BD: 1/17/14 • Adj. BW: 85 lbs. • Adj. WW: 807 lbs.

Sire: **S A V FINAL ANSWER 0035**
 SITZ TRAVELER 8180
 S A V EMULOUS 8145

Dam: **THSR MISS TANKER Z250**
 TNT TANKER U263
 PSR DAYDREAMER 124N

EPDs			
CE:	10.2	CW:	52.3
BW:	0.6	YG:	-0.1
WW:	87.7	MB:	0.29
YW:	137.7	BF:	0.00
MCE:	13.6	REA:	0.82
MM:	20.7	API:	134.1
MWW:	64.6	TI:	82.8

- * Homozygous Polled
- * Homozygous Black
- * Out of a first calf heifer
- * EPD's show calving easy with excellent growth
- * Excellent cow family going back to PSR Daydreamer N124



Lot 15

THSR IN FOCUS B419 ASA# 2854520

Owned by: TRIPLE H SIMMENTALS • Blk Polled 1/2 SM

Tattoo: B419 • BD: 1/15/14 • Adj. BW: 79 lbs. • Adj. WW: 775 lbs.

Sire: **MYTTY IN FOCUS**
 S A F FOCUS OF E R
 MYTTY COUNTESS 906

Dam: **NPS MS GOOD FORTUNE H60**
 SRS FORTUNE 500
 HOIBYS MISS STATS F672

EPDs			
CE:	14.9	CW:	29.4
BW:	-0.7	YG:	-0.05
WW:	62.2	MB:	0.55
YW:	101.2	BF:	-0.02
MCE:	10.1	REA:	0.24
MM:	26.9	API:	149.7
MWW:	58	TI:	76.5

- * Curve bender bull
- * Excellent set of EPD's
- * Outstanding cow family
- * Last of the direct sons of H60

THSR MR BEEF B430 ASA# 2854529

Owned by: TRIPLE H SIMMENTALS • Blk Polled PB

Tattoo: B430 • BD: 1/17/14 • Adj. BW: 87 lbs. • Adj. WW: 643 lbs.

Sire: **MR BEEF E141**
 BS MR ARAPAHOE 811A
 P&B LADY CH X094

Dam: **THSR ROLLANDA R516**
 SRS J914 PREFERRED BEEF
 OPPS MISS JENIFER J8

EPDs			
CE:	7.4	CW:	9.4
BW:	1.9	YG:	-0.26
WW:	44.6	MB:	0.02
YW:	61.2	BF:	-0.06
MCE:	10.2	REA:	0.32
MM:	29.5	API:	108.2
MWW:	51.8	TI:	52.7

- * Homozygous Black
- * Outstanding cow family
- * Keep all females

THSR SINGLETARY B435 ASA# 2854534

Owned by: TRIPLE H SIMMENTALS • Blk Polled PB

Tattoo: B435 • BD: 1/18/14 • Adj. BW: 96 lbs. • Adj. WW: 797 lbs.

Sire: **TRIPLE C SINGLETARY S3H**
 HOOKS SHEAR FORCE 38K
 LUCAS JOSIE 19K

Dam: **THSR MISS Y170**
 DRS J91 OUTBACK 604S
 THSR MISS U821

EPDs			
CE:	4.4	CW:	47
BW:	3.9	YG:	-0.25
WW:	77.5	MB:	0.43
YW:	120.2	BF:	-0.04
MCE:	9.1	REA:	0.91
MM:	18.3	API:	138.3
MWW:	57.1	TI:	79.5

- * Homozygous Black
- * Homozygous Polled
- * Actual weaning weight = 797
- * Growth Bull

THSR FINAL ANSWER B432 ASA# 2854531

Owned by: TRIPLE H SIMMENTALS • Blk Polled 1/2 SM

Tattoo: B432 • BD: 1/19/14 • Adj. BW: 88 lbs. • Adj. WW: 830 lbs.

Sire: **S A V FINAL ANSWER 0035**
 SITZ TRAVELER 8180
 S A V EMULOUS 8145

Dam: **THSR MISS TANKER Z242**
 TNT TANKER U263
 THSR MISS U841

EPDs			
CE:	10.7	CW:	48.9
BW:	0.2	YG:	-0.16
WW:	85.8	MB:	0.28
YW:	133	BF:	-0.01
MCE:	14.8	REA:	0.94
MM:	21.6	API:	137
MWW:	64.5	TI:	82.2

- * Excellent SimAngus bull would need to drive many miles to find one like him
- * Outstanding cow family
- * Adjusted weaning weight = 830
- * Growth Bull
- * Great set of numbers



Lot 16

17**THSR TANKER B437**

ASA# 2854535

Owned by: TRIPLE H SIMMENTALS • Blk Polled PB

Tattoo: B437 • BD: 1/19/14 • Adj. BW: 105 lbs. • Adj. WW: 748 lbs.

Sire: **TNT TANKER U263**
 MR NLC SUPERIOR S6018
 TNT MISS S17

Dam: **THSR MISS Y135**
 ES DAKOTA NK68
 THSR MISS U841

EPDs			
CE:	2.1	CW:	42.1
BW:	4.4	YG:	-0.44
WW:	68.3	MB:	-0.08
YW:	109.9	BF:	-0.07
MCE:	15.7	REA:	1.22
MM:	28	API:	102
MWW:	62.1	TI:	62.1

- * Homozygous Black
- * Bigger frame
- * Long sided
- * Outstanding cow family
- * Growth Bull

**Lot 17****18****THSR TANKER B438**

ASA# 2854536

Owned by: TRIPLE H SIMMENTALS • Blk Polled PB

Tattoo: B438 • BD: 1/19/14 • Adj. BW: 99 lbs. • Adj. WW: 759 lbs.

Sire: **TNT TANKER U263**
 MR NLC SUPERIOR S6018
 TNT MISS S17

Dam: **BCLR MISS SHANDI Y125**
 BMR EXPLORER
 BCLR MISS WENDI W917

EPDs			
CE:	3.4	CW:	41.9
BW:	4	YG:	-0.33
WW:	73.5	MB:	0.04
YW:	111.2	BF:	-0.05
MCE:	14.4	REA:	1.02
MM:	22.2	API:	106.6
MWW:	59	TI:	67.2

- * Long sided
- * Extremely Deep
- * Out of a very good cow
- * Growth bull

**Lot 18****19****BTS OB 4021B**

ASA# 2890247

Owned by: BLACK TIE SIMMENTALS • Blk Polled PB

Tattoo: 4021B • BD: 1/22/14 • Adj. BW: 91 lbs. • Adj. WW: 810 lbs.

Sire: **DRS J91 OUTBACK 604S**
 LAZY S RED SHOCKER 226L
 DRS MICKS BLK SABEL J91

Dam: **BTS REBA 125X**
 WINCHESTER HR P8315
 BDV REBA E20

EPDs			
CE:	8.7	CW:	37
BW:	3.3	YG:	-0.32
WW:	70.6	MB:	0.07
YW:	104.8	BF:	-0.06
MCE:	15.8	REA:	0.82
MM:	25.7	API:	113.2
MWW:	61	TI:	68.3

- *Homo Polled
- *Hetero Black
- *Actual weaning weight of 845 lbs.
- *Larger frame growth bull
- *Weaning weight EPD ranks in the top 15%
- *Yearling weight EPD ranks in the top 15%

**Lot 19****20****BTS CLUB KING 4023B**

ASA# 2890263

Owned by: BLACK TIE SIMMENTALS • Blk Polled PB

Tattoo: 4023B • BD: 1/22/14 • Adj. BW: 81 lbs. • Adj. WW: 881 lbs.

Sire: **RC CLUB KING 040R**
 HC HUMMER 12M
 RC MISS GRIFFEY 038N

Dam: **NPS MISS Y104**
 HOOKS PACESETTER 8P
 KR-SRF COOKIE N4

EPDs			
CE:	9.5	CW:	42.4
BW:	2	YG:	-0.23
WW:	80.3	MB:	0.18
YW:	117.9	BF:	-0.05
MCE:	9.6	REA:	0.7
MM:	17.7	API:	117.3
MWW:	57.8	TI:	77.6

- *Homo Polled
- *Hetero Black
- *Weaning weight EPD ranks in the top 5% of purebred animals
- *Yearling weight EPD ranks in the top 10% of purebred animals
- *Actual weaning weight of 898 lbs.
- *Actual birth weight of 77 lbs.
- *Growth bull for sure!

**Lot 20**



Lot 21

21

BTS CLUB KING 4025B

ASA# 2890211

Owned by: BLACK TIE SIMMENTALS • Blk Polled PB

Tattoo: 4025B • BD: 1/22/14 • Adj. BW: 89 lbs. • Adj. WW: 796 lbs.

Sire: RC CLUB KING 040R
 RC HUMMER 12M
 RC MISS GRIFFEY 038N

Dam: BTS MUSTANG SALLY N320
 WHF DESPERADO 212G
 SHOESTRING H&E E4

EPDs			
CE:	8.2	CW:	38.9
BW:	3	YG:	-0.27
WW:	72.7	MB:	0.09
YW:	108.8	BF:	-0.06
MCE:	12.3	REA:	0.71
MM:	17.3	API:	109
MWW:	53.7	TI:	69.4

*Homo Black
 *836 lbs. weaning weight
 *Weaning weight EPD ranks in the top 15% of purebred animals
 *Yearling weight EPD ranks in the top 15% of purebred animals
 *Growth bull for cows



Lot 22

22

THSR DUEL FOCUS B444

ASA# 2854541

Owned by: TRIPLE H SIMMENTALS • Blk Polled 1/2 SM

Tattoo: B444 • BD: 1/22/14 • Adj. BW: 80 lbs. • Adj. WW: 760 lbs.

Sire: TNT DUAL FOCUS T249
 MYTTY IN FOCUS
 TNT MISS R77

Dam: THSR MISS FINAL Z207
 S A V FINAL ANSWER 0035
 THSR X050

EPDs			
CE:	15.8	CW:	38.3
BW:	-1.4	YG:	-0.11
WW:	78.5	MB:	0.52
YW:	119.1	BF:	-0.01
MCE:	9.7	REA:	0.63
MM:	16.2	API:	156.5
MWW:	55.5	TI:	85.3

* Potential calving ease
 * Homozygous Polled
 * Homozygous Black
 * Top 3% for weaning
 * Top 10% for yearling
 * Excellent set of numbers

23

BTS CAIN 4020B

ASA# 2890220

Owned by: BLACK TIE SIMMENTALS • Blk Polled 3/4 SM

Tattoo: 4020B • BD: 1/22/14 • Adj. BW: 77 lbs. • Adj. WW: 777 lbs.

Sire: GIBBS 0601X RAISINCAIN
 MR NLC UPGRADE U8676
 ASR SWEET DREAMS M229

Dam: BTS I87 063X
 KMK ALLIANCE 6595 I87
 BTS MS POWER 719T

EPDs			
CE:	9.3	CW:	38
BW:	1.8	YG:	-0.3
WW:	70.9	MB:	0.16
YW:	110	BF:	-0.06
MCE:	8.2	REA:	0.8
MM:	22.6	API:	115
MWW:	58	TI:	69.8

*Homo Polled
 *Homo Black
 *Moderate framed
 *Weaning weight EPD ranks in the top 10%
 *Yearling weight EPD ranks in the top 20%
 *77 lbs. actual birth weight

24

BTS CAIN 4031B

ASA# 2890241

Owned by: BLACK TIE SIMMENTALS • Blk Polled PB

Tattoo: 4031B • BD: 1/23/14 • Adj. BW: 81 lbs. • Adj. WW: 770 lbs.

Sire: GIBBS 0601X RAISINCAIN
 MR NLC UPGRADE U8676
 ASR SWEET DREAMS M229

Dam: BTS WIN 101X
 WINCHESTER HR P8315
 BTS SHAKIRA M201

EPDs			
CE:	12.6	CW:	28.9
BW:	1.8	YG:	-0.48
WW:	63.9	MB:	0.08
YW:	94.8	BF:	-0.10
MCE:	11.3	REA:	0.94
MM:	20.8	API:	127.5
MWW:	52.7	TI:	67.3

*Hetero Black
 *79 lbs. actual birth weight
 *800 lbs. actual weaning weight
 *API ranks in the top 20% of purebred animals
 *CE ranks in the top 10% of purebred animals

25

THSR BOMBARDIER B445

ASA# 2854542

Owned by: TRIPLE H SIMMENTALS • Red Polled PB

Tattoo: B445 • BD: 1/23/14 • Adj. BW: 78 lbs. • Adj. WW: 677 lbs.

Sire: THSR BOMBARDIER U802
 TNT GUNNER N208
 THSR ROSE R535

Dam: THSR MISS OUTBACK Z264
 DRS J91 OUTBACK 604S
 WS MISS SHAMROCK S150

EPDs			
CE:	9.2	CW:	28.4
BW:	0.7	YG:	-0.23
WW:	63	MB:	0.05
YW:	96.3	BF:	-0.05
MCE:	13.6	REA:	0.59
MM:	26.3	API:	106.5
MWW:	57.8	TI:	66.4

* Homozygous Polled
 * Non-diluter
 * Deep made
 * Long sided
 * Dam is a first calf heifer

*Thank You
 for attending the
 2015 Dakota Power
 Bull Sale*

26**THSR DUEL FOCUS B446**

ASA# 2854543

Owned by: TRIPLE H SIMMENTALS • Blk Polled 1/2 SM

Tattoo: B446 • BD: 1/23/14 • Adj. BW: 90 lbs. • Adj. WW: 735 lbs.

Sire: **TNT DUAL FOCUS T249**
 MYTTY IN FOCUS
 TNT MISS R77

Dam: **THSR MISS DAKOTA Z237**
 ES DAKOTA NK68
 H7

EPDs			
CE:	10.7	CW:	39.8
BW:	2.1	YG:	-0.09
WW:	75.8	MB:	0.44
YW:	112.7	BF:	-0.02
MCE:	6.8	REA:	0.46
MM:	15.6	API:	127.1
MWW:	53.5	TI:	76.6

- * Homozygous Black
- * Excellent set of numbers
- * Long sided
- * Dam is a first calf heifer



Lot 26

27**BTS CLUB KING 4034B**

ASA# 2890219

Owned by: BLACK TIE SIMMENTALS • Blk Polled 3/4 SM

Tattoo: 4034B • BD: 1/24/14 • Adj. BW: 89 lbs. • Adj. WW: 772 lbs.

Sire: **RC CLUB KING 040R**
 HC HUMMER 12M
 RC MISS GRIFFEY 038N

Dam: **BTS 902C 056X**
 TOEBBEN ALLIANCE C902
 BTS PT BLACK LADY 833U

EPDs			
CE:	11.3	CW:	36.3
BW:	2.7	YG:	-0.16
WW:	68.5	MB:	0.33
YW:	105	BF:	-0.03
MCE:	11.9	REA:	0.58
MM:	22.1	API:	131.8
MWW:	56.3	TI:	71.2

- *Homo Polled
- *Homo Black
- *Growth numbers in the top 20%
- *Balanced set of EPD's



Lot 27

28**BTS TIME 4040B**

ASA# 2890224

Owned by: BLACK TIE SIMMENTALS • Blk Polled 3/4 SM

Tattoo: 4040B • BD: 1/26/14 • Adj. BW: 95 lbs. • Adj. WW: 838 lbs.

Sire: **LRS TIME ZONE 28U**
 HTP SVF IN DEW TIME
 LRS MS PAYBACK 617S

Dam: **BTS 187 064X**
 KMK ALLIANCE 6595 187
 KSR PR FANCY 651R

EPDs			
CE:	5.6	CW:	36.9
BW:	4.1	YG:	-0.14
WW:	73.2	MB:	0.39
YW:	103.3	BF:	-0.03
MCE:	9	REA:	0.53
MM:	14.5	API:	114.1
MWW:	51.1	TI:	71

- *Homo Polled
- *Homo Black
- *Likely to throw a blaze on calves
- *More frame with excellent length
- *Growth cow bull
- *896 lbs. actual weaning weight



Lot 28

29**BTS TIME 4045B**

ASA# 2890230

Owned by: BLACK TIE SIMMENTALS • Blk Polled PB

Tattoo: 4045B • BD: 1/27/14 • Adj. BW: 92 lbs. • Adj. WW: 784 lbs.

Sire: **LRS TIME ZONE 28U**
 HTP SVF IN DEW TIME
 LRS MS PAYBACK 617S

Dam: **TTC PRIME PRESTIGE 723S**
 GA PRIME RIB N341
 KSR PRESTIGE 413N

EPDs			
CE:	8.4	CW:	29.5
BW:	2.9	YG:	-0.31
WW:	65	MB:	0.26
YW:	93.2	BF:	-0.06
MCE:	9.6	REA:	0.76
MM:	16.2	API:	129.3
MWW:	48.7	TI:	68.9

- *Homo Black
- *Larger framed bull
- *Add pounds to any calf crop
- *Retain females out of this bull
- *820 lbs. actual weaning weight



Lot 29



Lot 30

30

THSR BOMBARDIER B454

ASA# 2854550

Owned by: TRIPLE H SIMMENTALS • Red Polled PB

Tattoo: B454 • BD: 1/27/14 • Adj. BW: 92 lbs. • Adj. WW: 788 lbs.

Sire: **THSR BOMBARDIER U802**
 TNT GUNNER N208
 THSR ROSE R535
 Dam: **THSR MISS IRON Z212**
 RFS RED IRON T20
 THSR XENA X025

EPDs			
CE:	10.4	CW:	31.8
BW:	1.6	YG:	-0.32
WW:	70.7	MB:	0.03
YW:	100.8	BF:	-0.06
MCE:	15.9	REA:	0.79
MM:	23.3	API:	121.7
MWW:	58.7	TI:	69.5

- * Homozygous Polled
- * Non-diluter
- * Deep made
- * Long sided
- * Dam is a first calf heifer
- * Potential calving ease

31

THSR MR BEEF B456

ASA# 2854552

Owned by: TRIPLE H SIMMENTALS • Blk Polled 3/4 SM

Tattoo: B456 • BD: 1/28/14 • Adj. BW: 93 lbs. • Adj. WW: 812 lbs.

Sire: **MR BEEF E141**
 BS MR ARAPAHOE 811A
 P&B LADY CH X094
 Dam: **THSR MISS Y125**
 MR NLC SUPERIOR S6018
 THSR U864

EPDs			
CE:	5	CW:	32.9
BW:	3.8	YG:	-0.26
WW:	68.6	MB:	0.01
YW:	97	BF:	-0.06
MCE:	9.8	REA:	0.65
MM:	23.8	API:	104.6
MWW:	58.1	TI:	63.6

- * Homozygous Black
- * Outstanding cow family
- * Keep all females

32

BTS CAIN 4057B

ASA# 2890196

Owned by: BLACK TIE SIMMENTALS • Blk Polled 3/4 SM

Tattoo: 4057B • BD: 1/31/14 • Adj. BW: 91 lbs. • Adj. WW: 827 lbs.

Sire: **GIBBS 0601X RAISINCAIN**
 MR NLC UPGRADE U8676
 ASR SWEET DREAMS M229
 Dam: **BTS MS 602C R532**
 EA 602C MAXIMUM 381
 SHOESTRING BIKS F82

EPDs			
CE:	9.1	CW:	39.6
BW:	2.4	YG:	-0.29
WW:	68.3	MB:	0.23
YW:	110.5	BF:	-0.07
MCE:	10.9	REA:	0.7
MM:	26.3	API:	119.9
MWW:	60.4	TI:	69.7

- * Homo Black
- * Actual weaning weight of 882 lbs.
- * Larger frame growth bull
- * Weaning weight EPD ranks in the top 15%
- * Yearling weight EPD ranks in the top 15%



Lot 33

33

BTS CLUB 4049B

ASA# 2890197

Owned by: BLACK TIE SIMMENTALS • Blk Polled PB

Tattoo: 4049B • BD: 1/29/14 • Adj. BW: 94 lbs. • Adj. WW: 736 lbs.

Sire: **RC CLUB KING 040R**
 HC HUMMER 12M
 RC MISS GRIFFEY 038N
 Dam: **BTS MS BLACK LINE 1062**
 KENCO/MF POWERLINE 204L
 KSR DIVIDEND 612R

EPDs			
CE:	4.9	CW:	35.9
BW:	3.6	YG:	-0.26
WW:	68.4	MB:	0.2
YW:	102.1	BF:	-0.04
MCE:	9.7	REA:	0.8
MM:	21	API:	98.9
MWW:	55.2	TI:	68.5

- * Homo Polled
- * Homo Black
- * Pedigree for growth on cows
- * Weaning weight EPD ranks in the top 25% of purebred animals
- * Yearling weight EPD ranks in the top 25% of purebred animals



Lot 34

34

BTS OB 4059B

ASA# 2890199

Owned by: BLACK TIE SIMMENTALS • Red Polled PB

Tattoo: 4059B • BD: 1/31/14 • Adj. BW: 84 lbs. • Adj. WW: 920 lbs.

Sire: **DRS J91 OUTBACK 604S**
 LAZY S RED SHOCKER 226L
 DRS MICKS BLK SABEL J91
 Dam: **NPS MISS RED SKY**
 ER BIG SKY 545B
 NPS R500

EPDs			
CE:	7.4	CW:	34.9
BW:	2.1	YG:	-0.2
WW:	70.8	MB:	0.14
YW:	104.4	BF:	-0.05
MCE:	14.9	REA:	0.57
MM:	32.1	API:	122.8
MWW:	67.5	TI:	71.5

- * Hetero Polled
- * Larger framed bull with a growth pedigree
- * Actual weaning weight of 951 lbs.
- * Actual birth weight 84 lbs.
- * 116% weaning weight ratio
- * Will add frame and length to a set of calves

35**THSR TOP GRADE B462**

ASA# 2854558

Owned by: TRIPLE H SIMMENTALS • Blk Polled 5/8 SM

Tattoo: B462 • BD: 2/2/14 • Adj. BW: 70 lbs. • Adj. WW: 732 lbs.

Sire: **MCM TOP GRADE 018X**
 MR NLC UPGRADE U8676
 MCM 513R

Dam: **THSR MISS FINALZ203**
 S A V FINAL ANSWER 0035
 THSR XIPIL X052

EPDs			
CE:	15.7	CW:	30.8
BW:	-3.3	YG:	-0.24
WW:	70.6	MB:	0.6
YW:	110.6	BF:	-0.03
MCE:	12.6	REA:	0.81
MM:	29	API:	166.9
MWW:	64.3	TI:	87.2

- * Homozygous Polled
- * Homozygous Black
- * Excellent set of numbers
- * Out of a first calf heifer
- * Potential calving ease bull

**Lot 35****36****THSR FINAL ANSWER B463**

ASA# 2854559

Owned by: TRIPLE H SIMMENTALS • Blk Polled 1/2 SM

Tattoo: B463 • BD: 2/2/14 • Adj. BW: 77 lbs. • Adj. WW: 776 lbs.

Sire: **S A V FINAL ANSWER 0035**
 SITZ TRAVELER 8180
 S A V EMULOUS 8145

Dam: **THSR MISS TANKER Z222**
 TNT TANKER U263
 TRI E MISS N92

EPDs			
CE:	13.6	CW:	46.3
BW:	-1.3	YG:	-0.11
WW:	84	MB:	0.36
YW:	132.1	BF:	0.00
MCE:	14.8	REA:	0.79
MM:	21.9	API:	151.3
MWW:	63.9	TI:	85.4

- * Excellent set of numbers
- * Out of a first calf heifer
- * Potential calving ease bull

**Lot 36****37****BTS CAIN 4065B**

ASA# 2890239

Owned by: BLACK TIE SIMMENTALS • Blk Polled PB

Tattoo: 4065B • BD: 2/4/14 • Adj. BW: 84 lbs. • Adj. WW: 847 lbs.

Sire: **GIBBS 0601X RAISINCAIN**
 MR NLC UPGRADE U8676
 ASR SWEET DREAMS M229

Dam: **BTS SWEET THING 9094W**
 KENCO/MF POWERLINE 204L
 BTS SHAKIRA M201

EPDs			
CE:	6.6	CW:	40.1
BW:	2.9	YG:	-0.43
WW:	72.5	MB:	0.01
YW:	110.8	BF:	-0.09
MCE:	8.9	REA:	1.03
MM:	19.1	API:	121.3
MWW:	55.4	TI:	68.4

- *Homo Polled
- *Hetero Black
- *Actual birth weight of 83 lbs.
- *Weaning weight ratio of 107%
- *Larger frame growth bull
- *Weaning weight EPD ranks in the top 10%
- *Yearling weight EPD ranks in the top 10%

**Lot 37****38****BTS CAIN 4067B**

ASA# 2890261

Owned by: BLACK TIE SIMMENTALS • Blk Polled PB

Tattoo: 4067B • BD: 2/4/14 • Adj. BW: 89 lbs. • Adj. WW: 843 lbs.

Sire: **GIBBS 0601X RAISINCAIN**
 MR NLC UPGRADE U8676
 ASR SWEET DREAMS M229

Dam: **KSR MYSTIC 700R**
 SARGE F6039
 KSR PRETTY WOMAN 777F

EPDs			
CE:	6.8	CW:	35.3
BW:	3.6	YG:	-0.36
WW:	69.9	MB:	0.07
YW:	101.3	BF:	-0.09
MCE:	6.8	REA:	0.69
MM:	23.3	API:	110.7
MWW:	58.2	TI:	67

- *Homo Polled
- *Homo Black
- *Weaning weight ratio of 107%
- *Larger frame cow bull
- *Weaning weight EPD ranks in the top 15% of purebred animals
- *Yearling weight EPD ranks in the top 25% of purebred animals

**Lot 38**



39

THSR MR BEEF B465

ASA# 2854561

Owned by: TRIPLE H SIMMENTALS • Blk Polled PB

Tattoo: B465 • BD: 2/4/14 • Adj. BW: 96 lbs. • Adj. WW: 711 lbs.

Sire: MR BEEF E141
 — BS MR ARAPAHOE 811A
 — P&B LADY CH X094
 Dam: THSR MISS Y115
 — MR NLC SUPERIOR S6018
 — BDV SIGNATURE T35

EPDs			
CE:	5.3	CW:	30.1
BW:	3.6	YG:	-0.28
WW:	63.4	MB:	-0.03
YW:	92.4	BF:	-0.05
MCE:	9.1	REA:	0.69
MM:	25	API:	96.6
MWW:	56.7	TI:	60.3

- * Homozygous Black
- * Outstanding cow family
- * Keep all females



Lot 40

40

THSR TANKER B467

ASA# 2854563

Owned by: TRIPLE H SIMMENTALS • Blk Polled PB

Tattoo: B467 • BD: 2/7/14 • Adj. BW: 98 lbs. • Adj. WW: 738 lbs.

Sire: TNT TANKER U263
 — MR NLC SUPERIOR S6018
 — TNT MISS S17
 Dam: THSR ROSALINE R517
 — HC HUMMER 12M
 — THSR MISS LIGHT WEIGHT M

EPDs			
CE:	7	CW:	29.2
BW:	1.8	YG:	-0.47
WW:	62.5	MB:	0.1
YW:	94.9	BF:	-0.07
MCE:	15.3	REA:	1.11
MM:	25.6	API:	118.6
MWW:	56.9	TI:	66.6

- * Homozygous Black
- * Excellent set of numbers
- * Growth Bull
- * Top 15% on weaning and yearling epds



Lot 41

41

THSR IDEAL B468

ASA# 2854564

Owned by: TRIPLE H SIMMENTALS • Red Polled PB

Tattoo: B468 • BD: 2/7/14 • Adj. BW: 97 lbs. • Adj. WW: 838 lbs.

Sire: ELLINGSON IDEAL X13
 — THSF FREEDOM 300N
 — ELLINGSON POWERLINE S681
 Dam: THSR LIVINTHEDREAM S626
 — CNS DREAM ON L186
 — THSR PLATNIUM P416

EPDs			
CE:	6.4	CW:	40.8
BW:	3.2	YG:	-0.36
WW:	77.4	MB:	-0.21
YW:	112	BF:	-0.10
MCE:	12.9	REA:	0.77
MM:	16.6	API:	108.1
MWW:	55.3	TI:	64.2

- * Homozygous Polled
- * Non-diluter
- * Extremely long will add pay weight to his calves
- * Growth Bull Herd sire
- * Top 5% on weaning and yearling
- * Ratio of 115 for weaning and 110 for yearling



Lot 42

42

BTS CJ 4072B

ASA# 2890204

Owned by: BLACK TIE SIMMENTALS • Red Polled PB

Tattoo: 4072B • BD: 2/9/14 • Adj. BW: 93 lbs. • Adj. WW: 918 lbs.

Sire: KS CAPTN JACK T518
 — HOOKS SHEAR FORCE 38K
 — BCLR MISS REBECCA R505
 Dam: BTS MS REAL RED 845U
 — TNT GETTIN IT DONE P357
 — BTS SHES SWEET L145

EPDs			
CE:	9.3	CW:	40.6
BW:	3.4	YG:	-0.3
WW:	81	MB:	-0.02
YW:	111.9	BF:	-0.05
MCE:	12.4	REA:	0.94
MM:	21.1	API:	121.8
MWW:	61.6	TI:	71.4

- * Homo Polled.
- * Actual weaning weight of 914 lbs. (Ratio of 116%)
- * Weaning weight EPD ranks in the top 3% of purebred animals
- * Larger framed bull with tons of stretch
- * Gain on test was 5.14 lbs./day
- * A bull that will add dollars to your bottom line

43**BTS CJ 4073B**

ASA# 2890190

Owned by: BLACK TIE SIMMENTALS • Blk Polled PB

Tattoo: 4073B • BD: 2/9/14 • Adj. BW: 82 lbs. • Adj. WW: 844 lbs.

Sire: **KS CAPTN JACK T518**
 HOOKS SHEAR FORCE 38K
 BCLR MISS REBECCA R505

Dam: **BTS MS FORTUNE R514**
 SRS FORTUNE 500
 RIV BLK LADY ARAPAHOE 85

EPDs			
CE:	11.1	CW:	26.7
BW:	2	YG:	-0.33
WW:	70.3	MB:	0.17
YW:	91.9	BF:	-0.04
MCE:	12.6	REA:	0.89
MM:	28.1	API:	131.8
MWW:	63.3	TI:	72.3

- *Hetero Black
- *Out of very productive cow
- *Adjusted weaning weight of 844 lbs.
- *Adjusted birth weight of 82 lbs.
- *Lower birth weight with above average growth
- *Weaning weight EPD ranks in the top 20% of purebred animals

**Lot 43****44****THSR OUT BACK B470**

ASA# 2854566

Owned by: TRIPLE H SIMMENTALS • Blk Polled PB

Tattoo: B470 • BD: 2/10/14 • Adj. BW: 82 lbs. • Adj. WW: 835 lbs.

Sire: **THSR OUT BACK X068**
 DRS J91 OUTBACK 604S
 NPS MS GOOD FORTUNE H60

Dam: **THSR MISS Y172**
 DIKEMANS SURE BET
 THSR MISS W962

EPDs			
CE:	9.3	CW:	39.5
BW:	1.2	YG:	-0.27
WW:	73.5	MB:	0.21
YW:	114.1	BF:	-0.04
MCE:	10.5	REA:	0.85
MM:	23.4	API:	133.9
MWW:	60.1	TI:	76.3

- *Homozygous Polled
- *Homozygous Black
- *Excellent set of numbers
- *Ratio of 115 for weaning and 113 for yearling
- *Extremely long growth bull

**Lot 44****45****BTS IRON 4076B**

ASA# 2890168

Owned by: BLACK TIE SIMMENTALS • Blk Polled 3/4 SM

Tattoo: 4076B • BD: 2/11/14 • Adj. BW: 84 lbs. • Adj. WW: 750 lbs.

Sire: **RFS RED IRON T20**
 35R
 RF RAUL

Dam: **BTS PT SOLID GOLD 830U**
 SS GOLDMINE L42
 B H ELLNORA 6106

EPDs			
CE:	8.7	CW:	15.3
BW:	0.7	YG:	-0.44
WW:	56.2	MB:	0.27
YW:	75.1	BF:	-0.06
MCE:	10.1	REA:	0.96
MM:	30.3	API:	121.3
MWW:	58.4	TI:	68.3

- *Homo Polled
- *Hetero Black
- *Lower birth weight bull
- *Retain females out of this bull
- *Milk EPD ranks in the top 15%
- *Ribeye EPD in the top 4% of all purebred animals

**Lot 45****46****BTS CJ 4078B**

ASA# 2890222

Owned by: BLACK TIE SIMMENTALS • Blk Polled 3/4 SM

Tattoo: 4078B • BD: 2/11/14 • Adj. BW: 89 lbs. • Adj. WW: 870 lbs.

Sire: **KS CAPTN JACK T518**
 HOOKS SHEAR FORCE 38K
 BCLR MISS REBECCA R505

Dam: **BTS 902C 055X**
 TOEBBEN ALLIANCE C902
 BTS PT DONE RED 849U

EPDs			
CE:	11.6	CW:	37.7
BW:	2.8	YG:	-0.21
WW:	76.1	MB:	0.24
YW:	107.9	BF:	-0.02
MCE:	11.3	REA:	0.8
MM:	23.7	API:	129.3
MWW:	61.7	TI:	73.1

- *Homo Polled
- *Hetero Black
- *872 actual weaning weight
- *Larger frame growth bull
- *Weaning weight ranks in the top 5%
- *Lower birth weight growth bull

**Lot 46**



Lot 47

47

THSR RYAN B484

ASA# 2854580

Owned by: TRIPLE H SIMMENTALS • Red Polled PB

Tattoo: B484 • BD: 2/17/14 • Adj. BW: 102 lbs. • Adj. WW: 780 lbs.

Sire: HPF/RYAN EXPEDITION Y039
 EXPEDITION T049
 CNS PERFECTION R521
 Dam: GLS MISS PACE W185
 HOOKS PACESETTER 8P
 GLS NICOLE N56

EPDs			
CE:	10.3	CW:	33.3
BW:	3.5	YG:	-0.38
WW:	65.2	MB:	-0.06
YW:	97.7	BF:	-0.05
MCE:	10.7	REA:	0.85
MM:	25.4	API:	106.8
MWW:	58	TI:	62

* Homozygous Polled Pending
 * Non-diluter
 * Growth Bull



Lot 48

48

BTS IRON 4082B

ASA# 2890214

Owned by: BLACK TIE SIMMENTALS • Red Polled PB

Tattoo: 4082B • BD: 2/18/14 • Adj. BW: 87 lbs. • Adj. WW: 769 lbs.

Sire: RFS RED IRON T20
 35R
 RF RAUL
 Dam: BTS HR 1056Y
 HSF HIGH ROLLER 12T
 BTS MS TEDDY 961W

EPDs			
CE:	9.4	CW:	40.2
BW:	2.2	YG:	-0.38
WW:	81.9	MB:	0.15
YW:	114.2	BF:	-0.06
MCE:	14.6	REA:	1.07
MM:	24.3	API:	138
MWW:	65.2	TI:	78.5

*Homo Polled
 *Lighter birth weight bull (Actual of 83 lbs.)
 *Stay EPD in the top 15%
 *Ribeye EPD in the top 10% of all purebred animals
 *Keep all females out of this guy



Lot 49

49

BTS IRON 4084B

ASA# 2890210

Owned by: BLACK TIE SIMMENTALS • Blk Polled PB

Tattoo: 4084B • BD: 2/18/14 • Adj. BW: 90 lbs. • Adj. WW: 831 lbs.

Sire: RFS RED IRON T20
 35R
 RF RAUL
 Dam: BTS MS GAMBER 708T
 TJ 57J THE GAMBLER
 BDV GKM SWEET SURPIS P4

EPDs			
CE:	5.6	CW:	33.7
BW:	2.8	YG:	-0.51
WW:	71.2	MB:	0.21
YW:	101	BF:	-0.08
MCE:	13.8	REA:	1.28
MM:	27.8	API:	132.5
MWW:	63.4	TI:	73.2

*Homo Polled
 *Hetero Black
 *Weaning weight ranks in the top 25% of purebred animals
 *Yearling weight ranks in the top 30% of purebred animals
 *Stay EPD in the top 15%
 *Retain all females out of this bull



Lot 50

50

BTS IRON 4087B

ASA# 2890209

Owned by: BLACK TIE SIMMENTALS • Blk Polled PB

Tattoo: 4087B • BD: 2/19/14 • Adj. BW: 87 lbs. • Adj. WW: 841 lbs.

Sire: RFS RED IRON T20
 35R
 RF RAUL
 Dam: BTS MS GAMBLER 706T
 TJ 57J THE GAMBLER
 KSR PR FANCY 651R

EPDs			
CE:	6.1	CW:	31.8
BW:	2.2	YG:	-0.46
WW:	72.4	MB:	0.23
YW:	99.6	BF:	-0.07
MCE:	12.8	REA:	1.19
MM:	22.1	API:	135.7
MWW:	58.3	TI:	74.3

*Homo Polled
 *Hetero Black
 *Stay EPD in the top 10% of all purebred animals
 *Ribeye EPD in the top 1% of all purebred animals
 *Balanced birth weight with well above average growth
 *Retain all females out of this bull

51**THSR B491**

ASA# 2854587

Owned by: TRIPLE H SIMMENTALS • Red Polled PB

Tattoo: B491 • BD: 2/19/14 • Adj. BW: 89 lbs. • Adj. WW: 832 lbs.

Sire: HPF/RYAN EXPEDITION Y039
 EXPEDITION T049
 CNS PERFECTION R521

Dam: THSR MISS Y151
 SRS J914 PREFERRED BEEF
 NPS MS GOOD FORTUNE H60

EPDs			
CE:	12.4	CW:	27.9
BW:	1.8	YG:	-0.27
WW:	61.4	MB:	0.1
YW:	92.7	BF:	-0.05
MCE:	9.2	REA:	0.66
MM:	23.4	API:	120.1
MWW:	54.1	TI:	65.7

* Non-diluter
 * Extremely long will add frame
 * Growth Bull

**Lot 51****52****BTS IRON 4090B**

ASA# 2890205

Owned by: BLACK TIE SIMMENTALS • Blk Polled PB

Tattoo: 4090B • BD: 2/20/14 • Adj. BW: 89 lbs. • Adj. WW: 804 lbs.

Sire: RFS RED IRON T20
 35R
 RF RAUL

Dam: BTS WIN 080X
 WINCHESTER HR P8315
 BTS 54Z BLKFOOT J922

EPDs			
CE:	9	CW:	26
BW:	2.4	YG:	-0.46
WW:	63.7	MB:	0.15
YW:	88.7	BF:	-0.07
MCE:	14.6	REA:	1.11
MM:	27.5	API:	126.1
MWW:	59.3	TI:	67.9

*Homo Polled
 *Hetero Black
 *Stay EPD in the top 4% of all purebred animals
 *Ribeye EPD in the top 3% of all purebred animals
 *Retain females out of this guy

53**THSR RYAN B492**

ASA# 2854588

Owned by: TRIPLE H SIMMENTALS • Red Polled PB

Tattoo: B492 • BD: 2/20/14 • Adj. BW: 89 lbs. • Adj. WW: 703 lbs.

Sire: HPF/RYAN EXPEDITION Y039
 EXPEDITION T049
 CNS PERFECTION R521

Dam: THSR XANADU X008
 WHEATLAND BULL 740 T
 KS CINNAMON J893

EPDs			
CE:	11.7	CW:	14
BW:	1	YG:	-0.36
WW:	50.8	MB:	-0.07
YW:	71.6	BF:	-0.07
MCE:	12.4	REA:	0.64
MM:	21.2	API:	107.1
MWW:	46.6	TI:	56

* Non-diluter
 * Extremely long will add frame
 * Growth Bull
 * Mother goes back to the Wheatland 740T bull and is a full sister to B406

54**BTS CJ 4092B**

ASA# 2890172

Owned by: BLACK TIE SIMMENTALS • Blk Polled PB

Tattoo: 4092B • BD: 2/22/14 • Adj. BW: 91 lbs. • Adj. WW: 801 lbs.

Sire: KS CAPTN JACK T518
 HOOKS SHEAR FORCE 38K
 BCLR MISS REBECCA R505

Dam: BTS BLACK IRON 2089Z
 RFS RED IRON T20
 THSR WILONA W912

EPDs			
CE:	8.8	CW:	45.3
BW:	3.5	YG:	-0.37
WW:	86.7	MB:	0.21
YW:	119.8	BF:	-0.05
MCE:	11.9	REA:	1.22
MM:	23.3	API:	122.7
MWW:	66.6	TI:	81

*Homo Polled
 *Hetero Black
 *Ribeye EPD in the top 1% of all purebred animals
 *Weaning weight EPD in the top 10% of all purebred animals
 *Yearling weight EPD in the top 20% of all purebred animals

55**BTS IRON 4098B**

ASA# 2890176

Owned by: BLACK TIE SIMMENTALS • Blk Polled 1/2 SM

Tattoo: 4098B • BD: 2/22/14 • Adj. BW: 87 lbs. • Adj. WW: 753 lbs.

Sire: RFS RED IRON T20
 35R
 RF RAUL

Dam: B H ELLNORA 6112
 WK HEAVY DESIGN 2445
 B H ELLNORA 613

EPDs			
CE:	5.2	CW:	25.7
BW:	2.5	YG:	-0.28
WW:	59.3	MB:	0.43
YW:	87.5	BF:	-0.04
MCE:	9.8	REA:	0.76
MM:	31.3	API:	111
MWW:	61.2	TI:	67.6

*Homo Polled
 *Hetero Black
 *Weaning weight EPD ranks in the top 10%
 *Yearling weight EPD ranks in the top 10%
 *Retain females from this bull

56**THSR RYAN B449**

ASA# 2854545

Owned by: TRIPLE H SIMMENTALS • Red Polled PB

Tattoo: B449 • BD: 2/22/14 • Adj. BW: 91 lbs. • Adj. WW: 756 lbs.

Sire: HPF/RYAN EXPEDITION Y039
 EXPEDITION T049
 CNS PERFECTION R521

Dam: HSR MS BEEF MAKER W142
 WS BEEF MAKER R13
 HSR MISS RED LIGHT J9128

EPDs			
CE:	12	CW:	18.7
BW:	2.1	YG:	-0.39
WW:	54.8	MB:	0.17
YW:	76.9	BF:	-0.06
MCE:	10.6	REA:	0.83
MM:	24.4	API:	117.8
MWW:	51.8	TI:	63.2

* Red Non-diluter
 * High maternal traits
 * Long made

57**BTS IRON 4109B**

ASA# 2890187

Owned by: BLACK TIE SIMMENTALS • Red Polled PB

Tattoo: 4109B • BD: 2/26/14 • Adj. BW: 88 lbs. • Adj. WW: 824 lbs.

Sire: RFS RED IRON T20
 35R
 RF RAUL

Dam: BTS PT 852U
 TNT GETTIN IT DONE P357
 KSR KITTEN 639R

EPDs			
CE:	6.7	CW:	34.5
BW:	2.5	YG:	-0.43
WW:	74.7	MB:	0.1
YW:	103.6	BF:	-0.07
MCE:	12.6	REA:	1.06
MM:	20.3	API:	125.3
MWW:	57.6	TI:	71.7

*Growth bull
 *Weaning weight EPD in the top 15% of all purebred animals
 *Ribeye EPD in the top 2%
 *Yearling weight EPD in the top 25% of all purebred animals
 *All with an acceptable birth weight EPD



Lot 58

58

THSR RYAN B452

ASA# 2854548

Owned by: TRIPLE H SIMMENTALS • Red Polled PB

Tattoo: B452 • BD: 2/22/14 • Adj. BW: 92 lbs. • Adj. WW: 780 lbs.

Sire: HPF/RYAN EXPEDITION Y039
 EXPEDITION T049
 CNS PERFECTION R521
 Dam: THSR XENA X025
 WINCHESTER HR P8315
 THSR MISS U842

EPDs			
CE:	15.9	CW:	18.9
BW:	1.1	YG:	-0.38
WW:	56.6	MB:	0.03
YW:	79.7	BF:	-0.07
MCE:	13	REA:	0.78
MM:	22	API:	122.4
MWW:	50.3	TI:	62.3

* Red Non-diluter
 * Homozygous Polled
 * Potential calving ease



Lot 59

59

BTS IRON 4103B

ASA# 2890175

Owned by: BLACK TIE SIMMENTALS • Blk Polled 3/4 SM

Tattoo: 4103B • BD: 2/24/14 • Adj. BW: 89 lbs. • Adj. WW: 753 lbs.

Sire: RFS RED IRON T20
 35R
 RF RAUL
 Dam: RDDS MS LUCKY DICE 880T
 GW LUCKY DICE 187H
 M701

EPDs			
CE:	6.8	CW:	27.7
BW:	2.1	YG:	-0.41
WW:	63.3	MB:	0.13
YW:	92.1	BF:	-0.07
MCE:	10	REA:	0.97
MM:	25.6	API:	108.4
MWW:	57.2	TI:	67

*Homo Polled
 *Hetero Black
 *Ribeye EPD in the top 2%
 *Larger framed bull
 *Moderate birth weight EPD

60 **BTS IRON 4114B** ASA# 2890203
 Owned by: BLACK TIE SIMMENTALS • Red Polled PB
 Tattoo: 4114B • BD: 2/26/14 • Adj. BW: 88 lbs. • Adj. WW: 828 lbs.

Sire: RFS RED IRON T20
 35R
 RF RAUL
 Dam: BTS MS 1085Y
 KENCO/MF POWERLINE 204L
 TTC LEGACYS IRIS 771S

EPDs			
CE:	5.3	CW:	35.8
BW:	2.4	YG:	-0.46
WW:	72.1	MB:	0.08
YW:	105.3	BF:	-0.06
MCE:	11.9	REA:	1.25
MM:	26.4	API:	117.6
MWW:	62.5	TI:	70.8

*Adjusted weaning weight of 828 lbs.
 *Actual birth weight of 84 lbs.
 *Weaning weight EPD in the top 25% of all purebred animals
 *Yearling weight EPD in the top 25% of all purebred animals
 *Pedigree that has produced well above average growth
 *Pedigree that has produced many replacement females



Lot 62

61

BTS YAHOO 4130B

ASA# 2890260

Owned by: BLACK TIE SIMMENTALS • Blk Polled 5/8 SM

Tattoo: 4130B • BD: 3/3/14 • Adj. BW: 72 lbs. • Adj. WW: 748 lbs.

Sire: HOOK'S YAHOO 131Y
 HOOKS WYOMING 97W
 HOOK'S UNO 54U
 Dam: BTS PT MS SWEET I87 804U
 KMK ALLIANCE 6595 I87
 BDV GKM SWEET SURPISE P4

EPDs			
CE:	10.6	CW:	28.6
BW:	0.5	YG:	-0.12
WW:	64.9	MB:	0.38
YW:	97.5	BF:	-0.01
MCE:	8.8	REA:	0.56
MM:	28	API:	126.3
MWW:	60.4	TI:	71.8

*Homo Polled
 *Hetero Black
 *Low birth weight bull (73 lbs.)
 *Potential heifer bull
 *Pedigree that has produced well above average growth
 *Pedigree that has produced many replacement females
 *Retain females out of this bull

62

THSR RYAN B483

ASA# 2854579

Owned by: TRIPLE H SIMMENTALS • Red Polled PB

Tattoo: B483 • BD: 2/28/14 • Adj. BW: 85 lbs. • Adj. WW: 816 lbs.

Sire: HPF/RYAN EXPEDITION Y039
 EXPEDITION T049
 CNS PERFECTION R521
 Dam: THSR MISS U805
 TNT GUNNER N208
 THSR MISS MAUREEN M212

EPDs			
CE:	14.4	CW:	20.8
BW:	-0.1	YG:	-0.32
WW:	57.1	MB:	0
YW:	85.4	BF:	-0.04
MCE:	12.5	REA:	0.78
MM:	29.7	API:	120.8
MWW:	58.3	TI:	64

* Homozygous Polled
 * Non-diluter
 * Growth Bull Herd sire
 * One of youngest bulls in our offering

63**BTS YAHOO 4144B**

ASA# 2890179

Owned by: BLACK TIE SIMMENTALS • Red Polled 5/8 SM

Tattoo: 4144B • BD: 3/6/14 • Adj. BW: 82 lbs. • Adj. WW: 740 lbs.

Sire: **HOOK'S YAHOO 131Y**
 HOOK'S WYOMING 97W
 HOOK'S UNO 54U

Dam: **BTS MS NO SURPRISE 1069Y**
 KMK ALLIANCE 6595 I87
 BDV GKM SWEET SURPRISE P4

EPDs			
CE:	9.7	CW:	36.7
BW:	1.8	YG:	-0.09
WW:	71.9	MB:	0.42
YW:	108.1	BF:	-0.01
MCE:	8.2	REA:	0.57
MM:	26.2	API:	124.5
MWW:	62.2	TI:	75.1

- *Homo Polled
- *Weaning weight EPD in the top 15%
- *Yearling weight EPD in the top 20%
- *Low birth weight bull (80 lbs.)
- *Pedigree that has produced well above average growth
- *Pedigree that has produced many replacement females
- *Retain females out of this bull

65**BTS YAHOO 4151B**

ASA# 2890258

Owned by: BLACK TIE SIMMENTALS • Red Polled 3/4 SM

Tattoo: 4151B • BD: 3/10/14 • Adj. BW: 86 lbs. • Adj. WW: 756 lbs.

Sire: **HOOK'S YAHOO 131Y**
 HOOK'S WYOMING 97W
 HOOK'S UNO 54U

Dam: **KSR TRUE FLECK 693R**
 BDV TRUE CHOICE 21L
 KSR BLACK FLECK 93J

EPDs			
CE:	4.6	CW:	38.8
BW:	4.1	YG:	-0.08
WW:	70.9	MB:	0.35
YW:	105.7	BF:	0.00
MCE:	3.8	REA:	0.59
MM:	22.5	API:	100.8
MWW:	58	TI:	69.3

- *Growth bull
- *Gain on test was 5.02 lbs. / day
- *Weaning weight EPD ranks in the top 20%
- *Yearling weight EPD ranks in the top 30%
- *Pedigree that has produced well above average growth

67**BTS YAHOO 4160B**

ASA# 2890253

Owned by: BLACK TIE SIMMENTALS • Blk Polled PB

Tattoo: 4160B • BD: 3/25/14 • Adj. BW: 79 lbs. • Adj. WW: 900 lbs.

Sire: **HOOK'S YAHOO 131Y**
 HOOK'S WYOMING 97W
 HOOK'S UNO 54U

Dam: **TTC LEGACYS IRIS 771S**
 ELLINGSON LEGACY N333
 KSR MISS IRIS 571P

EPDs			
CE:	9.3	CW:	43.6
BW:	2.3	YG:	-0.16
WW:	79.4	MB:	0.24
YW:	118.7	BF:	-0.02
MCE:	10.6	REA:	0.74
MM:	25.8	API:	124.6
MWW:	65.5	TI:	75.5

- *Homo Black
- *Adjusted weaning weight of 900 lbs.
- *Adjusted birth weight of 79 lbs.
- *Weaning weight EPD ranks in the top 10% of purebred animals
- *Yearling weight EPD ranks in the top 10% of purebred animals
- *Will add pounds to any calf crop
- *Pedigree that has produced well above average growth

64**BTS YAHOO 4150B**

ASA# 2890249

Owned by: BLACK TIE SIMMENTALS • Red Polled PB

Tattoo: 4150B • BD: 3/7/14 • Adj. BW: 84 lbs. • Adj. WW: 789 lbs.

Sire: **HOOK'S YAHOO 131Y**
 HOOK'S WYOMING 97W
 HOOK'S UNO 54U

Dam: **KSR LEGACY 637R**
 KS DEXTER L691
 GSR MS LEGACY 137N

EPDs			
CE:	9.1	CW:	27.3
BW:	2.6	YG:	-0.26
WW:	62.7	MB:	0.34
YW:	90.3	BF:	-0.04
MCE:	10.4	REA:	0.76
MM:	29.4	API:	124.1
MWW:	60.8	TI:	68.3

- *Balanced set of EPD'S
- *Lower birth weight bull (84 lbs.)
- *Gain on test was 5.22 lbs./day
- *Moderate framed growth bull
- *Mild EPD ranks in the top 10% of purebred animals

66**THSR RYAN B498**

ASA# 2854594

Owned by: TRIPLE H SIMMENTALS • Red Polled PB

Tattoo: B498 • BD: 3/10/14 • Adj. BW: 96 lbs. • Adj. WW: 781 lbs.

Sire: **HPF/RYAN EXPEDITION Y039**
 EXPEDITION T049
 CNS PERFECTION R521

Dam: **GLS MISS PACW W119**
 HOOK'S PACESETTER 8P
 GLS R66

EPDs			
CE:	11.6	CW:	26.1
BW:	2	YG:	-0.31
WW:	58.8	MB:	0.03
YW:	89.1	BF:	-0.05
MCE:	9.9	REA:	0.81
MM:	24.2	API:	117.7
MWW:	53.6	TI:	62.3

- *Youngest bulls in our offering
- *Non-diluter
- *Growth Bull
- *Mother is a really good Pacesetter Cow

**Lot 67****- NOTES -**

QUICK GUIDE

to ASA EPDs and \$ INDEXES

Expected Progeny Differences (EPDs): EPDs are the most accurate and effective tool available for comparing genetic levels. In using EPDs, the difference between two sires' EPDs represents the unit difference expected in the performance of their progeny. For example, if sires A and B have EPDs of +10 and -5, a 15-unit difference would be expected in their progeny (moving from -5 to +10 yields 15 units). Key to using EPDs is knowing what units they are expressed in. For example, if the above case referred to weaning weight EPDs, A would be expected to sire 15-pounds more *weaning weight* than B. If calving ease were the trait, A would be expected to sire 15-percent more *unassisted births* in first-calf heifers; in other words, if B sired 30 assists in a group of 100 heifers, we'd expect A to require 15 assists. A percentile-ranking chart is required to determine where a bull's EPDs rank him relative to other bulls in the breed. For percentile rankings or more detailed information about EPDs and \$ indexes visit www.simmental.org. Listed below are the units ASA EPDs are expressed in:

All-Purpose Index (API): Dollars per cow exposed under an all-purpose-sire scenario. (See below for more details.)

Back Fat (BF): Inches of backfat.

Birth Weight (BW): Pounds of birth weight.

Calving Ease (CE): Percent of unassisted births when used on heifers.

Carcass Weight (CW): Pounds of carcass weight.

Maternal Calving Ease (MCE): Percent of unassisted births in first-calving daughters.

Milk (MLK): Pounds of weaning weight due to milk.

Marbling (MRB): Marbling score.

Maternal Weaning Weight (MWW): Pounds of weaning weight due to milk and growth.

Ribeye Area (REA): Square inches of ribeye.

Warner-Bratzler Shear Force (WBSF): Pounds of force required to shear a steak.

Stayability (STAY): Percent of daughters remaining in the cowherd at 6 years of age.

Terminal Index (TI): Dollars per cow exposed under a terminal-sire scenario. (See below for more details.)

Weaning Weight (WW): Pounds of weaning weight.

Yearling Weight (YW): Pounds of yearling weight.

Yield Grade (YG): Yield grade score.

\$ Indexes: Though EPDs allow for the comparison of genetic levels for many economically important traits, they only provide a piece of the economic puzzle. That's where \$ indexes come in. Through well-conceived, rigorous mathematical computation, \$ indexes blend EPDs and economics to estimate an animal's overall impact on your bottom line. The same technology that led to the dramatic progress in swine, poultry and dairy genetics over the last several decades was used to develop the following \$ indexes:

All-Purpose Index (API): Evaluates sires for use on the entire cow herd (bred to both Angus first-calf heifers and mature cows) with the portion of their daughters required to maintain herd size retained and the remaining heifers and steers put on feed and sold grade and yield.

Terminal Index (TI): Evaluates sire for use on mature Angus cows with all offspring put on feed and sold grade and yield.

Using API and TI: First, determine which index to use; if you're keeping replacements use API, if not, TI. Then, just as with EPDs, zero in on the unit difference between bulls. (As described above, index units are in dollars per cow exposed.) The difference can be used to determine how much a bull is worth compared to another. Or, put another way, how much you can pay for one bull compared to another. For example, when buying an all-purpose-type sire, you can quickly figure a bull scoring +100 for API is worth an extra \$6,000 over a +50 bull if both are exposed to 30 cows over 4 years ($\$50 \text{ diff.} \times 30 \text{ hd.} \times 4 \text{ yr.} = \$6,000$). A percentile-ranking chart is required to determine where a bull's index value ranks him relative to other bulls in the breed. For percentile rankings or more detailed information about EPDs and \$ indexes

— ASA Suggested Sale Terms and Conditions —

BIDDING AND APPLICABLE LAW: All cattle listed in this offering comply with prevailing sale terms and conditions as set forth by the laws of the state wherein the sale is conducted. There are no warranties, expressed or implied, by either the auctioneer or consignor, except as set forth herein, as to the merchantability of fitness for any particular purpose of any animal offered in this sale. The right to bid or the right to reject the final bid, if done before the hammer falls, is reserved for all sellers unless otherwise announced from the sale block or as prohibited by law in the state wherein the sale is being conducted.

ANNOUNCEMENTS: Any change of information other than in the catalog will be announced from the auction block and such announcements shall take precedence over printed material. All statements made from the auction block or those made by the seller (in private treaty), must be documented by seller if requested by the buyer at time of sale.

TERMS: Terms of sale are cash unless satisfactory credit arrangements have been made with the seller previous to the sale of any animal so affected.

PURCHASER'S RISK: Each animal becomes the property of and therefore is also the risk of the purchaser as soon as it is sold; except it shall be the obligation of the seller to see that animals are fed and cared for free of charge to purchaser, until loaded for shipment or until the expiration of twenty-four (24) hours after the sale, whichever occurs first.

HEALTH REQUIREMENTS:

1. All cattle entered for sale must meet the health regulations of the state in which they are sold. All other agreements regarding the health of the animal will be between the buyer and seller and should be documented in writing.
2. If sale cattle are returned to the seller for an adjustment, they must meet the health requirements of the state they are returned to.

CERTIFICATE OF REGISTRY: Each animal, which is catalogued, offered and sold as a registered animal, shall have a certificate of registry available at time of sale. When an animal is sold as "eligible for registry" or "registry applied for", the seller shall be responsible for obtaining the certificate of registry and for the proper transfer of the certificate to the purchaser including full payment of transfer fees.

IDENTIFICATION: Each animal, at time of sale, must have a readable tattoo or brand corresponding to that shown on the certificate of registration.

AUTHENTICITY OF PEDIGREE: When an animal, through parental validation, is determined to have an ancestry other than that reported on the registration certificate, the buyer shall be entitled to a refund of the purchase price from the seller upon return of the animal to the farm of the seller at the seller's expense. The animal in question, at the buyer's option, may be exchanged for another animal of equal value, or if agreeable with the buyer, the seller may have the certificate returned to the buyer. Any adjustment provided herein, if selected, shall absolve the seller from further liability for authenticity of pedigree to the buyer.

BREEDING GUARANTEES AND DEFINITIONS:

1. Females are guaranteed to be breeders, with the exception of:
 - a) Female calves sold at side of dam
 - b) Injury or disease occurring to the animal after time of sale
 - c) Gross negligence or willful misconduct on the part of the purchaser
 - d) Females used in ovum transplant after time of sale
 - e) Cows sold with calf at side or a female that calves after sale to breeding prior to the date of sale
2. Bulls are guaranteed to be breeders (definition as the ability to settle healthy cows by the time the bull is 18 months of age) with the exception of:
 - a) Bull calves sold at side of dam
 - b) Injury or disease occurring to the animal after time of sale
 - c) Gross negligence or willful misconduct on the part of the purchaser
 - d) Bulls shown competitively after sale
3. Any guarantees with respect to the ability to freeze semen shall be made by separate agreement between buyer and seller.
4. Safe in calf females are females that have been diagnosed pregnant by a competent veterinarian, and are pregnant at time of sale.
5. A bred female is a female known to have been served by a bull either by natural breeding or artificial insemination, but it does not necessarily mean that the female is safe in calf to that service.
6. A pasture-bred female is a female that has been pastured with a designated bull and has been exposed for the time stated, but it does not necessarily mean that this female is safe in calf to that bull.
7. An open female is a non-pregnant animal.
8. Calves sold off their dams (split pairs) shall carry the full breeding guarantee.

PRIVILEGE OF PURCHASER TO EXAMINE: The purchaser of a female animal may have her examined within twenty-four (24) hours after the fall of the hammer and prior to removal from sale premises. The pregnancy status of breeding status of a female so examined, when found not to be as represented at the time of sale, is cause for the female to be returned to the seller as unsold.

EMBRYO TRANSFER:

1. Sellers should provide upon request a complete history of embryo transfer activity for any female offered for sale.
2. Withholding information on the existence of frozen embryos at the time of sale would be considered an unethical practice.

HORNED-SCURRED-POLLED DEFINITIONS:

1. **HORNED** — An animal with a horn growth affixed to the skull that has or has not been removed.
2. **POLLED/SCURRED** — An animal with rudimentary horn growth that will not develop into a horn. The rudimentary horn growth may or may not become affixed to the skull at an older age.
3. **POLLED** — An animal with absence of horn growth. (An animal can have scurs and still be genetically polled.)
4. **SMOOTH POLLED** — A smooth-polled individual has no scurs and does not develop scurs later in life.

GUARANTEES:

1. If an animal is sold as polled or polled/scurred and proves to be horned, the seller shall be obligated to refund the purchase price upon return of the animal to the farm of the seller at the expense of the seller or may be exchanged for a polled animal of equal value whichever is acceptable to the buyer. The buyer has thirty (30) days from date of sale to notify the seller that an adjustment is in order.
2. If an animal is sold as smooth-polled and proves to be scurred, the seller shall be obligated to refund the price upon return of the animal to the farm of the seller at the expense of the seller or at the buyer's option shall be exchanged for a smooth-polled animal of equal value.
3. If an animal is sold as polled and develops scurs, the seller will not be obligated to make any adjustment as a scurred animal is considered polled.
4. If an animal is sold as polled and has scurs, it shall be so announced at the time of sale that the animal has scurs. If it is not announced and the buyer finds before the animal leaves the sale premises that the animal has scurs, the buyer must notify the seller of the findings. The seller shall then be obligated to refund the purchase price.

OPTIONS AND PRIVILEGES OF RETURN OR ADJUSTMENT:

The following adjustments do not preclude the right of the buyer and seller to mutually agree upon other terms and conditions for settlement of any dispute.

1. All claims for adjustment or refund must be made in writing either six (6) months from the date of sale or no later than when the animal reaches 24 months of age whichever occurs later, with the exception of claims involving misrepresentation of service sire or as otherwise provided herein.
2. In the event an animal is claimed to be a non-breeder, the animal may be returned to the farm of the seller, at the buyer's expense, if in good physical condition, and the return is in compliance with the health requirements of the seller's state. The seller shall be entitled to a six (6) month trial period following the return of the animal in which to prove the animal is a breeder. If at the end of six (6) months the seller is unable to prove the animal is a breeder, the seller shall, at the option of buyer, replace the animal with another equal value or refund the purchase price. Either option shall be deemed full satisfaction and settlement.
3. If a female is sold as "safe in calf" to a given sire or sires on a specified date or dates and proves not to be as represented, the buyer is entitled to a refund of the purchase price from the seller upon return of the animal and resulting progeny thereof to the farm of the seller at the seller's expense.
4. If a female is sold as "open" and proves to be with calf at time of sale and examined pregnant within sixty (60) days after sale, the buyer may return the animal to the farm of the seller prior to calving for a refund of the full purchase price or for another animal of equal value, whichever acceptable to the buyer. It shall be the obligation of the seller to bear any expenses incurred for transportation of the animal in question to the farm of the seller.

GENETIC TESTING AND TraitTrac STATUS: Sellers must identify the TraitTrac status and the results of any qualitative genetic testing performed on any animals or genetic material offered for sale. The ASA considers it an unethical practice to misrepresent or fail to disclose the TraitTrac status or qualitative genetic test results of any animal or genetic material.

DISCLOSURE OF MATERIAL INFORMATION: Sellers must disclose all material information concerning any animal or genetic material offered for sale. For the purposes of these Sale Terms and Conditions, "Material Information" is defined as any information which would be likely to affect the value of the animal or genetic material if the information were known to the public. Material Information includes, but is not limited to, information related to genetic tests, blood tests, ultrasound pregnancy results, disease tests, pregnancy and fertility test results, information related to the sex and age of in utero calves or embryos, and information related to the fertilization status of in utero calves, including whether the calf was conceived via artificial insemination or natural service. The ASA considers it an unethical practice to misrepresent or fail to disclose any Material Information concerning an animal or genetic material offered for sale.

LIMITATIONS OF OBLIGATIONS: These sale terms and conditions constitute a binding legal obligation between the buyer and seller of any animal or genetic material sold under these terms and conditions. However, the ASA, its directors, officers, employees and agents do not assume any obligation, legal or otherwise, to enforce the sale terms and conditions agreed to between buyer and seller.



Bull Sale

Patrick Thorson

PO Box 1
Kindred, ND 58051

Created by:

ASA PUBLICATION, INC

2 Simmental Way, Bozeman, MT 59715
Phone: 406-587-2778 • Fax: 406-587-8853
www.simmental.org



Lot 4